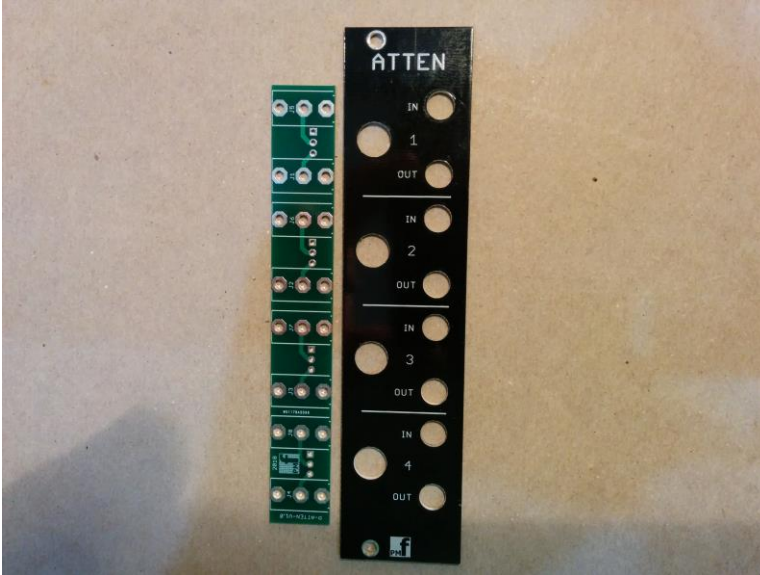


Attenuator V1.0 – Assembly Guide

Thank you for purchasing this module! This is an easy build.



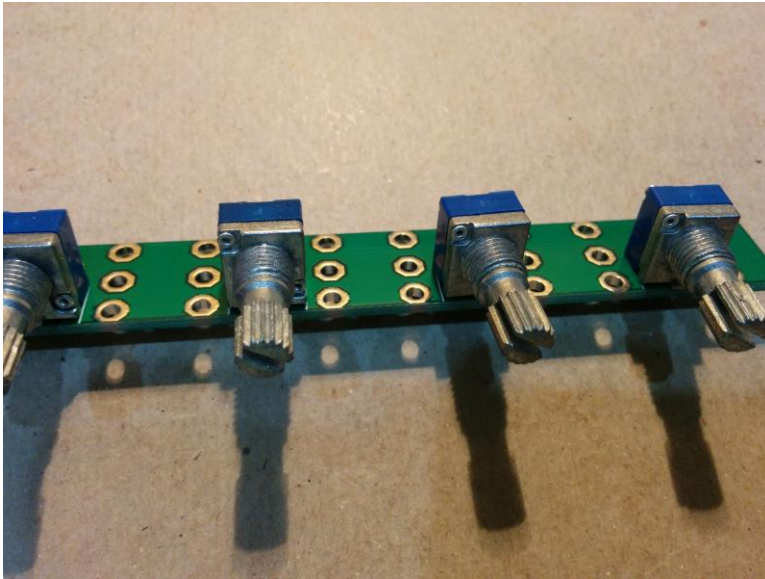
The module is designed and sized for **Euro rack** systems. No power supply is needed for this module. Follow the parts lists, these instructions and the PCB silkscreen text to build the module. Please ensure that you place the components on the correct side. There are components installed on BOTH SIDES of the board.

1. Potentiometers

If the pots have positioning lugs on the front, cut these off with a sharp pair of flush cutting pliers. The front of the pot (where the shaft protrudes) needs to be flat.

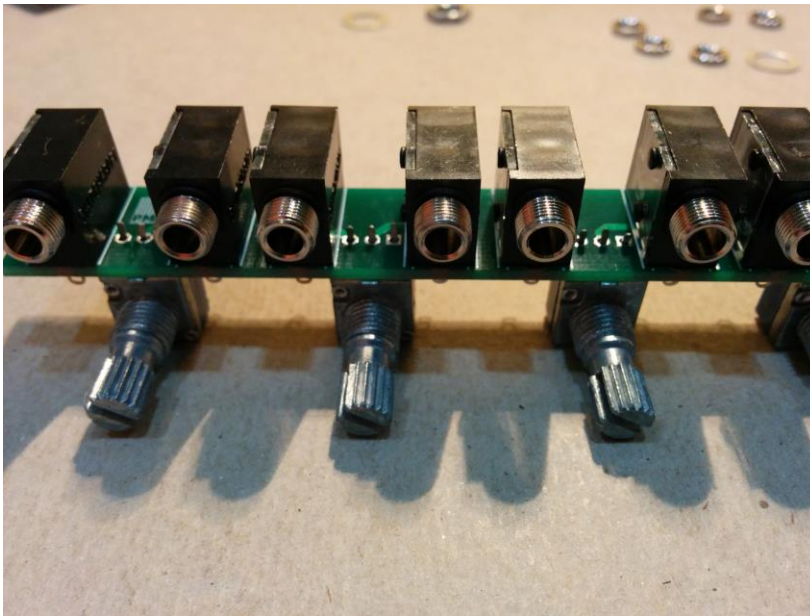
Install 4 pots (100K) on the BOTTOM of the board.

Carefully align the pots so they are flush with the edge of the board and perfectly upright and tight to the board surface. Solder one pin only. These will be finalized later. Please ensure they are on the CORRECT SIDE OF THE BOARD. See Photo.



2. 3.5mm Jack Sockets

These are installed on the top of the board. Tack one pin only with solder. These will be finalized later. Please ensure they are on the CORRECT SIDE OF THE BOARD. See Photo.



Final Assembly

1. Place the front panel over the board so that the 3.5mm jacks align with the holes in the panel.
2. Put nuts on the jacks and FULLY TIGHTEN all of them. Do not overtighten!



3. Now fully solder as many of the remaining pins on the jacks and pots that you can access without burning nearby components.
4. Now remove the panel and finish soldering the more difficult to reach pins.
5. Put washers on the pots and place the front panel over the PCB again so that the pots, switches and 3.5mm jacks align with the holes in the panel.
6. Put nuts on the pots and jacks and FULLY TIGHTEN all of them. Do not overtighten!

7. Install the knobs.

